



20167



24785

Standard Microliter Syringes

for Agilent 7673, 7683, 7693A, and 6850 Autosamplers

- Hamilton and SGE syringes are designed and tested to meet critical autosampler performance needs.
- Needle point styles are designed to withstand multiple, rapid injections through a septum.

Hamilton

Volume	Needle Term.	Needle Gauge	Needle Length	Point Style	Hamilton Model	cat.#	qty.	Restek cat.#
0.5 µL	ASRN	23s	1.71"	Agilent	7000.5	86276	ea.	24895
0.5 µL	ASRN	26s	1.71"	Agilent	7000.5	86274	ea.	21221
5 µL	ASRN	23s	1.71"	Agilent	75	87957	ea.	20172
5 µL	ASN	23s	1.71"	Agilent	75	87987	ea.	20168
5 µL	ASN	23s	1.71"	Agilent	75	87990	6-pk.	20170
5 µL	ASN	26s	1.71"	Agilent	75	87988	ea.	24592
5 µL	ASN	26s	1.71"	Agilent	75	87989	6-pk.	21230
5 µL	ASRN	23s-26s	1.71"	Agilent	75	87959	ea.	21223
5 µL	ASN	23s-26s	1.71"	Agilent	75	87993	ea.	24593
5 µL	ASN	23s-26s	1.71"	Agilent	75	87994	6-pk.	24594
10 µL	ASRN	23s	1.71"	Agilent	701	80357	ea.	20171
10 µL	ASN	23s	1.71"	Agilent	701	80387	ea.	20167
10 µL	ASN	23s	1.71"	Agilent	701	80390	6-pk.	20169
10 µL	ASRN	26s	1.71"	Agilent	701	80358	ea.	24597
10 µL	ASN	26s	1.71"	Agilent	701	80388	ea.	24595
10 µL	ASN	26s	1.71"	Agilent	701	80389	6-pk.	24599
10 µL	ASRN	23s-26s	1.71"	Agilent	701	80359	ea.	24598
10 µL	ASN	23s-26s	1.71"	Agilent	701	80393	ea.	24596
10 µL	ASN	23s-26s	1.71"	Agilent	701	80391	6-pk.	24600

SGE

Volume	Needle Term.	Needle Gauge	Needle Length	Point Style	SGE Model	cat.#	qty.	Restek cat.#
0.5 µL	R	23	42 mm	Cone	0.5BR-HP-0.63	000410	ea.	24791
0.5 µL	R	26	42 mm	Cone	0.5BR-HP-0.47	000400	ea.	24790
5 µL	F	23	42 mm	Cone	5F-HP-0.63	001810	ea.	24781
5 µL	F	23	42 mm	Cone	SK-5F-HP-0.63	001814	6-pk.	24783
5 µL	F	26	42 mm	Cone	5F-HP-0.47	001800	ea.	24780
5 µL	F	26	42 mm	Cone	SK-5F-HP-0.47	001804	6-pk.	24782
5 µL	F	23-26s	42 mm	Cone	5F-HP-0.63/0.47	001821	ea.	21210
5 µL	F	23-26s	42 mm	Cone	SK-5F-HP-0.63/0.47	001822	6-pk.	21214
10 µL	R	23	42 mm	Cone	10R-HP-0.63	002815	ea.	24795
10 µL	F	23	42 mm	Cone	10F-HP-0.63	002810	ea.	24785
10 µL	F	23	42 mm	Cone	SK-10F-HP-0.63	002814	6-pk.	24787
10 µL	R	26	42 mm	Cone	10R-HP-0.47	002805	ea.	24794
10 µL	F	26	42 mm	Cone	10F-HP-0.47	002800	ea.	24784
10 µL	F	26	42 mm	Cone	SK-10F-HP-0.47	002804	6-pk.	24786
10 µL	F	23-26	42 mm	Cone	10F-HP-0.63/0.47	002821	ea.	21212
10 µL	F	23-26	42 mm	Cone	SK-10F-HP-0.63/0.47	002822	6-pk.	21215
Large Volume								
50 µL	R	23	42 mm	Cone	50R-HP-0.63	004665	ea.	24799

Gas-Tight PTFE-Tipped Syringes

for Agilent 7673, 7683, 7693A, and 6850 Autosamplers

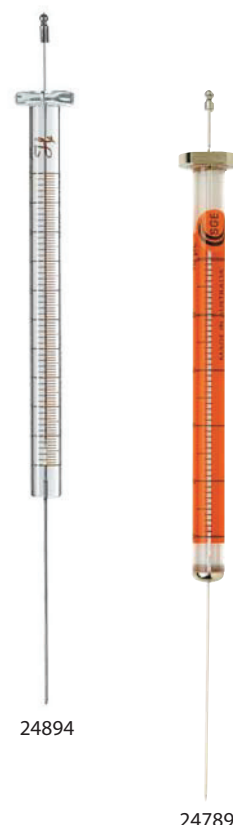
Hamilton

Volume	Needle Term.	Needle Gauge	Needle Length	Point Style	Hamilton Model	cat.#	qty.	Restek cat.#
10 µL	ASN	23s	1.71"	Agilent	1701	80080	ea.	24894
10 µL	ASRN	23s	1.71"	Agilent	1701	80087	ea.	21224
10 µL	ASRN	26s	1.71"	Agilent	1701	80088	ea.	21228
10 µL	ASRN	23s-26s	1.71"	Agilent	1701	80089	ea.	21229

SGE

Volume	Needle Term.	Needle Gauge	Needle Length	Point Style	SGE Model	cat.#	qty.	Restek cat.#
10 µL	F	23	42 mm	Cone	10F-HP-GT-0.63	002812	ea.	24789
10 µL	F	23-26	42 mm	Cone	10F-AG-GT-0.63/0.47C	002826	ea.	22256
10 µL	R	23-26	42 mm	Cone	10R-HP-GT-0.63/0.47	002829	ea.	21220

NEW!



24894

24789

Replacement Needles

for Agilent 7673, 7683, 7693A, and 6850 Autosampler Syringes

Hamilton

Syringe Volume	Needle Gauge	Needle Length	Point Style	Hamilton cat.#	qty.	Restek cat.#
5-10 µL	23s	1.71"	Agilent	7786-01	6-pk.	20164
5-10 µL	26s	1.71"	Agilent	7786-02	6-pk.	20165
5-10 µL	23s-26s	1.71"	Agilent	7785-01	6-pk.	20166

SGE

Syringe Volume	Needle Gauge	Needle Length	Point Style	SGE cat.#	qty.	Restek cat.#
0.5 µL	23	42 mm	Cone	033715	ea.	24821
0.5 µL	26	42 mm	Cone	033708	ea.	24820
5 µL	23	42 mm	Cone	036720	2-pk.	24823
10 µL	23	42 mm	Cone	037717	2-pk.	24825
10 µL	26	42 mm	Cone	037715	2-pk.	24824
25-250 µL	23	42 mm	Cone	038717	2-pk.	24826

Do not reuse PTFE washers.

Guide to Needle Termination Codes

Hamilton:

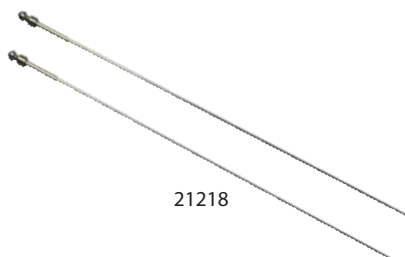
(N) Cemented Needle
(RN) Removable Needle
(ASN) Autosampler Cemented Needle
(ASRN) Autosampler Removable Needle
(TLL) PTFE Luer Lock
(KH) Knurled Hub
(LT) Luer Tip
(LTN) Luer Tip Cemented Needle

SGE:

(F) Fixed Needle
(R) Removable Needle
(LL) Luer Lock
(LT) Luer Tip

Replacement Plunger Assembly, PTFE-Tipped

for Agilent 7673, 7683, 7693A, and 6850 Autosampler Syringes



21218

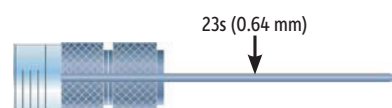
SGE

Syringe Volume	Needle Term.	SGE cat.#	qty.	Restek cat.#
10 µL	F	031808	2-pk.	21218
10 µL	R	031809	2-pk.	21284

Needle Gauge for Agilent 7673, 7683, 7693A, and 6850 Syringes

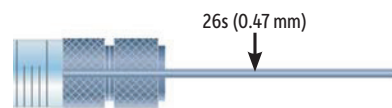
Single Gauge Needle (23s)

- The most popular gauge for Agilent 7673.
- Best for Merlin Microseal septum and standard septum-equipped GCs.
- Packed column injection ports.
- Split/splitless injection ports.



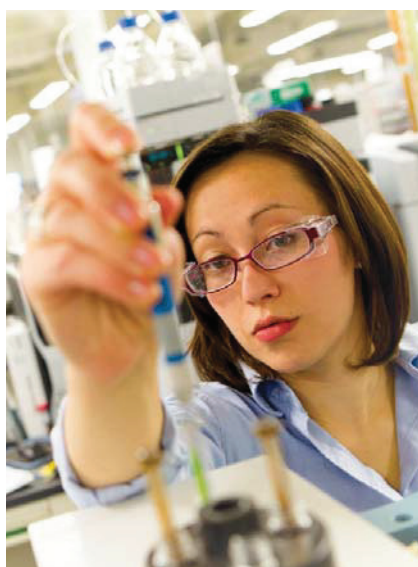
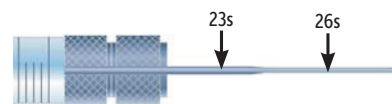
Single Gauge Needle (26s)

- On-column injection ports.
- Split/splitless injection ports.



23s-26s—Dual Gauge (tapered)

- Durability of a 23s gauge needle.
- Ability of a 26s gauge needle to perform split/splitless and on-column injections.



Precision in all we do ensures quality for you.

Cross-Reference for Agilent Syringes

Similar to Agilent Part #	Restek Part #	Description	Page
5181-1267	21212, 24596	10 µL Standard Syringe, Fixed Needle, 23-26 Gauge	374
5181-1273	21210, 24593	5 µL Standard Syringe, Fixed Needle, 23-26 Gauge	374
5181-3319	20166	Needle for 10 µL Standard Syringe, 23-26 Gauge	375
5181-3321	24598	10 µL Standard Syringe, Removable Needle, 23-26 Gauge	374
5181-3358	24919	PTFE-Tipped Plunger for 10 µL Standard Syringe, Removable Needle	390
5181-3360	21215, 24600	10 µL Standard Syringe, Fixed Needle, 23-26 Gauge (6-pk.)	374
5181-3365	21218	PTFE-Tipped Plunger for 10 µL Standard Syringe, Fixed Needle	376
5181-8809	24894, 24789	10 µL Gas-tight Syringe, Fixed Needle, 23 Gauge	375
5181-8811	20164, 24825	Needle for 10 µL Gas-tight Syringe, 23 Gauge	375
5181-8813	21224	10 µL Gas-tight Syringe, Removable Needle, 23 Gauge	375
5182-0830	24821	Needle for 0.5 µL Standard Syringe, 23 Gauge	375
5182-0832	20166	Needle for 5-10 µL Autosampler Syringe, 23-26 Gauge	375
5182-0834	20172	5 µL Standard Syringe, Removable Needle, 23 Gauge	374
5182-0835	21223	5 µL Standard Syringe, Removable Needle, 23-26 Gauge	374
5182-0875	20170, 24783	5 µL Standard Syringe, Fixed Needle, 23 Gauge (6-pk.)	374
9301-0713	20167, 24785	10 µL Standard Syringe, Fixed Needle, 23 Gauge	374
9301-0714	24595, 24784	10 µL Standard Syringe, Fixed Needle, 26 Gauge	374
9301-0725	20169, 24787	10 µL Standard Syringe, Fixed Needle, 23 Gauge (6-pk.)	374
9301-0891	24592, 24780	5 µL Standard Syringe, Fixed Needle, 26 Gauge	374
9301-0892	20168, 24781	5 µL Standard Syringe, Fixed Needle, 23 Gauge	374

Merlin MicroShot Injector

- NIST traceability assures accurate injections.
- Fixed volume reduces sampling error.
- Saves time—no need to transfer to autosampler vials.
- Prevents bent syringe plungers.
- Five injection volumes available.*

Increase the accuracy and reproducibility of manual injections with the Merlin MicroShot injector. This new injector is calibrated to NIST reference standards to assure accurate and traceable displacement. Precise repeated injections of the preset volume can be made using a standard autosampler syringe with less variation than when injecting by hand. The trigger mechanism provides rapid sample delivery, which reduces needle residence time in the injection port and minimizes potential sample discrimination.

The Merlin MicroShot injector allows convenient sampling from a wide variety of containers, so you can save time by eliminating the need to transfer aliquots into autosampler vials. The design of this unit also includes a plunger support, which protects the syringe plunger and prevents it from bending.

Fits Agilent-style (ball-end plunger) autosampler syringes with either fixed or removable, 23- or 26-gauge needles.



22226

Description	Merlin cat.#	qty.	Restek cat.#
0.1 µL injection volume	701-01	ea.	22226
0.2 µL injection volume	701-02	ea.	22227
0.5 µL injection volume	701-05	ea.	22228
1.0 µL injection volume	701-10	ea.	22229
2.0 µL injection volume	701-20	ea.	22230

*Syringe not included. Requires Agilent-style (ball-end plunger) autosampler syringe.



Sky[®]
Inlet Liners

True Blue Performance

Exceptionally inert Sky[®] inlet liners with state-of-the-art deactivation improve trace-level analysis—**and now come with a 100% satisfaction guarantee!***

See page 193–202.

www.restek.com/sky



* For details on our 100% satisfaction guarantee, visit www.restek.com/sky



24956

Autosampler Syringes for Bruker/Varian 8000 Series GCs

- Hamilton and SGE syringes are designed and tested to meet critical autosampler performance needs.
- Needle point styles are designed to withstand multiple, rapid injections through a septum.

Hamilton

Volume	Needle Term.	Needle Gauge	Needle Length	Point Style	Hamilton Model	cat.#	qty.	Restek cat.#
Bruker/Varian 8100/8200 Syringes								
10 µL	RN	26s	1.99"	5	701 Varian	202880	ea.	24956

SGE

Volume	Needle Term.	Needle Gauge	Needle Length	Point Style	SGE Model	cat.#	qty.	Restek cat.#
Bruker/Varian 8035, 8100, & 8200 Syringes								
10 µL*	R	25	53 mm	S/Hole	10R-VA8X-II	002924	ea.	24852

Bruker/Varian CP 8400, CP8410 Syringes

10 µL	F	23	50 mm	Cone	10F-VA8400-5/0.63C	002951	ea.	24923
10 µL	F	26	50 mm	Bevel	10F-VA8400-5/0.47	002950	ea.	21202
10 µL	R	26	50 mm	Cone	10R-VA8400-5/0-0.47C	002952	ea.	24930

*Gas-tight syringe.



24857

Replacement Needles for Bruker/Varian 8000 Series Autosampler Syringes

SGE

Syringe Volume	Needle Gauge	Needle Length	Point Style	SGE cat.#	qty.	Restek cat.#
10 µL	23	53 mm	S/Hole	037779	2-pk.	24857
10 µL*	25	53 mm	S/Hole	037780	ea.	24858
10 µL**	25	53 mm	S/Hole	037777	ea.	24854
10 µL	25	53 mm	2	037776	2-pk.	24855

*Straight needle shaft, 0.20 mm ID needle, for use with viscous samples.

**Tapered needle shaft, 0.12 mm ID needle.

High Dynamic (HD) Headspace Syringes

for CTC CombiPAL Autosamplers

- High Dynamic (HD) plunger optimized for higher throughput in the headspace technique.
- Excellent performance over a large range of temperatures and temperature gradients.
- Increased lifetime, as compared to traditional headspace syringes.
- Increased accuracy and reproducibility of headspace GC analysis.

Hamilton

Volume	Needle Term.	Needle Gauge	Needle Length	Point Style	Hamilton		qty.	Restek cat.#
					Model	cat.#		
1.0 mL	N	23	2"/51 mm	5	1001	203082	ea.	26552
2.5 mL	N	23	2"/51 mm	5	1002	203084	ea.	26553
5.0 mL	N	23	2"/51 mm	5	1005	203086	ea.	26554
1.0 mL	N	26	2"/51 mm	5	1001	203141	ea.	26555
2.5 mL	N	26	2"/51 mm	5	1002	203181	ea.	26556
5.0 mL	N	26	2"/51 mm	5	1005	203182	ea.	26557

Replacement Plungers for HD-Type CTC CombiPAL AS Syringes

Hamilton

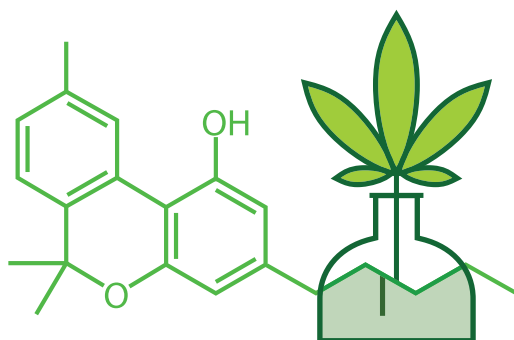
Volume	Hamilton		qty.	Restek cat.#
	Model	cat.#		
1.0 mL	1001	207114	ea.	26558
5.0 mL	1005	207116	ea.	26560



26554



26560



Growing Analytical Solutions for Medical Cannabis Labs

Products and expertise for accurate, reliable results every time

www.restek.com/cannabis

Guide to Needle Termination Codes

Hamilton:

- (N) Cemented Needle
- (RN) Removable Needle
- (ASN) Autosampler Cemented Needle
- (ASRN) Autosampler Removable Needle
- (TLL) PTFE Luer Lock
- (KH) Knurled Hub
- (LT) Luer Tip
- (LTN) Luer Tip Cemented Needle

SGE:

- (F) Fixed Needle
- (R) Removable Needle
- (LL) Luer Lock
- (LT) Luer Tip



22757



24922

Autosampler Syringes for CTC GCs

- Hamilton and SGE syringes are designed and tested to meet critical autosampler performance needs.
- Needle point styles are designed to withstand multiple, rapid injections through a septum.

Hamilton

Volume	Needle Term.	Needle Gauge	Needle Length	Point Style	Hamilton Model	cat.#	qty.	Restek cat.#
1.2 µL	N	26	2"/51 mm	AS	7701.2N	203185	ea.	22755
5 µL	N	26s	2"/51 mm	AS	75N	203189	ea.	22756
10 µL	N	23s	2"/51 mm	AS	701N	203361	ea.	22757
10 µL	N	23s-26s	2"/51 mm	AS	701N	203362	ea.	22758
10 µL	N	23s	2"/51 mm	2	701N	203363	ea.	22759
10 µL	N	26s	2"/51 mm	AS	701N	203205	ea.	22761
10 µL	N	26s	2"/51 mm	2	701N	203269	6-pk.	22762
25 µL*	N	26s	2"/51 mm	AS	1702N	203043	ea.	22763
25 µL*	N	26s	2"/51 mm	AS	1702N Slim Line**	203074	ea.	22764
100 µL*	N	26s	2"/51 mm	AS	1710N Slim Line**	203076	ea.	22765

Due to collar design, Hamilton syringes may not work with older generation LEAP autosamplers.

*Gas-tight syringe.

**Barrel OD = 6.7 mm; all other 25 µL and 100 µL syringes have a 7.9 mm barrel OD.

SGE

Volume	Needle Term.	Needle Gauge	Needle Length	Point Style	SGE Model	cat.#	qty.	Restek cat.#
0.5 µL	R	23	50 mm	Cone	0.5BNR-C/F-0.63	000492	ea.	24928
0.5 µL	R	26	50 mm	Cone	0.5BNR-C/F-0.47	000490	ea.	24926
5 µL	F	23	50 mm	Cone	5F-C/F-5/0.63	001981	ea.	24921
5 µL	F	26	50 mm	Cone	5F-BT-5/0.47	0019821	ea.	24920
10 µL*	F	23	50 mm	Cone	10F-BT-GT-5/0.63C	0029871	ea.	22749
10 µL	R	23	50 mm	Cone	10R-BT-0.63	0029841	ea.	24932
NEW! 10 µL*	F	23	50 mm	Cone	10F-C/T-GT-5/0.63C	002987	ea.	22254
NEW! 10 µL	F	23	50 mm	Cone	10F-C/T-5/0.63C	002981	ea.	22255
10 µL	F	26	50 mm	Cone	10F-BT-5/0.47C	0029801	ea.	24922
10 µL	F	26	50 mm	Cone	SK-10F-BT-5/0.47C	0029861	6-pk.	24925
NEW! 10 µL	F	26	50 mm	Cone	10F-C/T-5/0.47C	002980	ea.	22252
NEW! 10 µL	F	26	50 mm	Cone	10F-C/T-5/0.47C	002986	6-pk.	22253
NEW! 25 µL*	F	23	50 mm	Cone	25F-C/T-GT-5/0.63C	003987	ea.	23897
25 µL*	F	23	50 mm	Cone	25F-BT-GT-5/0.63C	0039871	ea.	22751
NEW! 25 µL*	R	26	50 mm	S	25R-C/T-GT-5/0.47H	003988	ea.	23899
100 µL*	F	23	50 mm	Cone	100F-C/T-GT-5/0.63C	005335	ea.	22753
100 µL*	R	26	50 mm	Cone	100R-C/T-GT-5/0.47C	005333	ea.	22754

*Gas-tight syringe.

Replacement Needles for CTC Autosampler Syringes

SGE

Syringe Volume	Needle Gauge	Needle Length	Point Style	SGE cat.#	qty.	Restek cat.#
0.5 µL	23	50 mm	Cone	033772	kit	24929
10 µL	23	50 mm	Cone	037787	2-pk.	24933

Replacement Plungers for CTC Autosampler Syringes

SGE

Syringe Volume	Needle Term.	SGE Model	cat.#	qty.	Restek cat.#
25 µL	F	P25F-C/T-GT	031817	ea.	23907
25 µL	F	25F-BT-GT	0318171	ea.	23900



24933

23900

NEW!

Autosampler Syringes for PerkinElmer Autosystem and Clarus 500 GCs

- Hamilton and SGE syringes are designed and tested to meet critical autosampler performance needs.
- Needle point styles are designed to withstand multiple, rapid injections through a septum.

Hamilton

Volume	Needle Term.	Needle Gauge	Needle Length	Point Style	Hamilton Model	cat.#	qty.	Restek cat.#
5 µL	ASN	23	2.756"	3	75ASN/PE	88035	ea.	24953
5 µL	ASN	26	2.756"	3	75ASN/PE	88040	ea.	24952

SGE

Volume	Needle Term.	Needle Gauge	Needle Length	Point Style	SGE Model	cat.#	qty.	Restek cat.#
0.5 µL	R	23	70 mm	Cone	0.5BR-PE-0.63	000478	ea.	24811
0.5 µL	R	26	70 mm	Cone	0.5BR-PE-0.47	000475	ea.	24810
5 µL	F	23	70 mm	Cone	5F-PE-0.63	001954	ea.	24813
5 µL*	F	23	70 mm	Cone	5F-PE-GT-0.63	001957	ea.	24815
5 µL	F	26	70 mm	Cone	5F-PE-0.47	001953	ea.	24812
5 µL*	F	26	70 mm	Cone	5F-PE-GT-0.47	001955	ea.	24814
50 µL	F	23	70 mm	Cone	50F-PE-0.63	004670	ea.	24816

*Gas-tight.



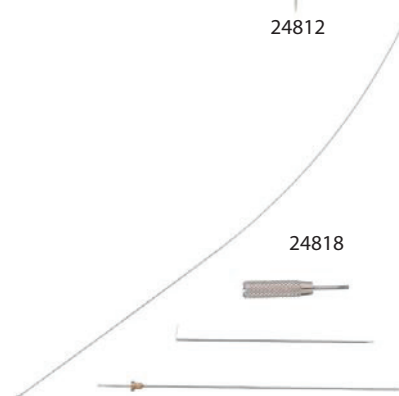
24952

24812

Replacement Needle and Plunger Kit for PerkinElmer Autosampler Syringes

SGE

Syringe Volume	Needle Gauge	Needle Length	Point Style	SGE cat.#	qty.	Restek cat.#
0.5 µL	23	70 mm	Cone	033765	kit	24818



24818

Guide to Needle Termination Codes

Hamilton:

- (N) Cemented Needle
- (RN) Removable Needle
- (ASN) Autosampler Cemented Needle
- (ASRN) Autosampler Removable Needle
- (TLL) PTFE Luer Lock
- (KH) Knurled Hub
- (LT) Luer Tip
- (LTN) Luer Tip Cemented Needle

SGE:

- (F) Fixed Needle
- (R) Removable Needle
- (LL) Luer Lock
- (LT) Luer Tip



Autosampler Syringes for Shimadzu GCs

- Hamilton and SGE syringes are designed and tested to meet critical autosampler performance needs.
- Needle point styles are designed to withstand multiple, rapid injections through a septum.

Hamilton
for Shimadzu AOC 9 GCs

Volume	Needle Term.	Needle Gauge	Needle Length	Point Style	Hamilton Model	cat.#	qty.	Restek cat.#
5 µL	RN	26s	2"/51 mm	2	75RN	87930	ea.	24617
5 µL	N	26s	2"/51 mm	2	75N	87900	ea.	24938
10 µL	RN	26s	2"/51 mm	2	701RN	80330	ea.	24530

SGE
for Shimadzu AOC 14, 17, 20, and 20i GCs

Volume	Needle Term.	Needle Gauge	Needle Length	Point Style	SGE Model	cat.#	qty.	Restek cat.#
0.5 µL	R	23	42 mm	Cone	0.5BR-S-0.63	000445	ea.	24841
0.5 µL	R	26	42 mm	Cone	0.5BR-S-0.47	000440	ea.	24840
5 µL	F	23	42 mm	Cone	5F-S-0.63	001988	ea.	24843
10 µL	R	23	42 mm	Cone	10R-S-0.63	002898	ea.	24845
10 µL*	R	23	42 mm	Cone	10R-S-GT-0.63	002902	ea.	24846
10 µL	R	26	42 mm	Cone	10R-S-0.47	002897	ea.	24844

*Gas-tight syringe.



Replacement Needles for Shimadzu Autosampler Syringes

SGE

Syringe Volume	Needle Gauge	Needle Length	Point Style	SGE cat.#	qty.	Restek cat.#
0.5 µL	23	42 mm	Cone	033745	ea.	24747
10 µL	23	42 mm	Cone	037747	2-pk.	24749
10 µL	26	42 mm	Cone	037745	2-pk.	24748

Guide to Needle Termination Codes

Hamilton:

- (N) Cemented Needle
- (RN) Removable Needle
- (ASN) Autosampler Cemented Needle
- (ASRN) Autosampler Removable Needle
- (TLL) PTFE Luer Lock
- (KH) Knurled Hub
- (LT) Luer Tip
- (LTN) Luer Tip Cemented Needle

SGE:

- (F) Fixed Needle
- (R) Removable Needle
- (LL) Luer Lock
- (LT) Luer Tip

Syringes for Thermo Scientific RSH Autosampler

SGE

Volume	Needle Term.	Needle Gauge	Needle Length	Point Style	SGE			Restek cat.#
					Model	cat.#	qty.	
5 µL	F	23	57 mm	Cone	5F-RTC/RSH-5.7/0.63C	001861	ea.	23908
5 µL	F	23	85 mm	Cone	5F-RTC/RSH-8.5/0.63C	001863	ea.	23909
5 µL	F	26	57 mm	Cone	5F-RTC/RSH-5.7/0.47C	001865	ea.	23910
5 µL	F	26	85 mm	Cone	5F-RTC/RSH-8.5/0.47C	001867	ea.	23911
5 µL	R	23	57 mm	Cone	5R-RTC/RSH-5.7/0.63C	001871	ea.	23912
5 µL	R	23	85 mm	Cone	5R-RTC/RSH-8.5/0.63C	001873	ea.	23913
5 µL	R	26	57 mm	Cone	5R-RTC/RSH-5.7/0.47C	001875	ea.	23914
5 µL	R	26	85 mm	Cone	5R-RTC/RSH-8.5/0.47C	001877	ea.	23915
10 µL	F	23	57 mm	Cone	10F-RTC/RSH-5.7/0.63C	002861	ea.	23916
10 µL*	F	23	57 mm	Cone	10F-RTC/RSH-GT-5.7/0.63C	002862	ea.	23917
10 µL	F	23	85 mm	Cone	10F-RTC/RSH-8.5/0.63C	002863	ea.	23918
10 µL*	F	23	85 mm	Cone	10F-RTC/RSH-GT-8.5/0.63C	002864	ea.	23919
10 µL	F	26	57 mm	Cone	10F-RTC/RSH-5.7/0.47C	002865	ea.	23920
10 µL*	F	26	57 mm	Cone	10F-RTC/RSH-GT-5.7/0.47C	002866	ea.	23921
10 µL	F	26	85 mm	Cone	10F-RTC/RSH-8.5/0.47C	002867	ea.	23922
10 µL*	F	26	85 mm	Cone	10F-RTC/RSH-GT-8.5/0.47C	002868	ea.	23923
10 µL	R	23	57 mm	Cone	10R-RTC/RSH-5.7/0.63C	002871	ea.	23924
10 µL*	R	23	57 mm	Cone	10R-RTC/RSH-GT-5.7/0.63C	002872	ea.	23925
10 µL	R	23	85 mm	Cone	10R-RTC/RSH-8.5/0.63C	002873	ea.	23926
10 µL*	R	23	85 mm	Cone	10R-RTC/RSH-GT-8.5/0.63C	002874	ea.	23927
10 µL	R	26	57 mm	Cone	10R-RTC/RSH-5.7/0.47C	002875	ea.	23928
10 µL*	R	26	57 mm	Cone	10R-RTC/RSH-GT-5.7/0.47C	002876	ea.	23929
10 µL	R	26	85 mm	Cone	10R-RTC/RSH-8.5/0.47C	002877	ea.	23930
10 µL*	R	26	85 mm	Cone	10R-RTC/RSH-GT-8.5/0.47C	002878	ea.	23931
25 µL*	F	26	57 mm	Cone	25F-RTC/RSH-GT-5.7/0.47C 2	003866	ea.	23932
50 µL*	F	26	57 mm	Cone	50F-RTC/RSH-GT-5.7/0.47C	004866	ea.	23933
100 µL*	F	26	57 mm	Cone	100F-RTC/RSH-GT-5.7/0.47(0.11)C	005866	ea.	23934
250 µL*	F	26	57 mm	Cone	250F-RTC/RSH-GT-5.7/0.47C	006866	ea.	23935

*Gas-tight syringe.



23909



23928



Replacement Needles for Thermo Scientific RSH Autosampler Syringes

SGE

Syringe Volume	Needle Gauge	Needle Length	Point Style	SGE			Restek cat.#
				Model	cat.#	qty.	
5 µL	23	57 mm	Cone	N5-RSH-5.7/0.63C 2-pk	036871	2-pk.	23942
5 µL	23	85 mm	Cone	N5-RSH-8.5/0.63C 2-pk	036873	2-pk.	23943
5 µL	26	57 mm	Cone	N5-RSH-5.7/0.47C 2-pk	036875	2-pk.	23944
5 µL	26	85 mm	Cone	N5-RSH-8.5/0.47C 2-pk	036877	2-pk.	23945
10 µL	23	57 mm	Cone	N10-RSH-5.7/0.63C 2-pk	037871	2-pk.	23946
10 µL	23	85 mm	Cone	N10-RSH-8.5/0.63C 2-pk	037873	2-pk.	23947
10 µL	26	57 mm	Cone	N10-RSH-5.7/0.47C 2-pk	037875	2-pk.	23948
10 µL	26	85 mm	Cone	N10-RSH-8.5/0.47C 2-pk	037877	2-pk.	23949

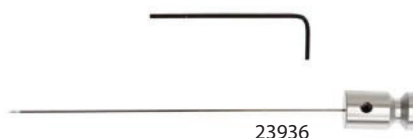


23945

Replacement Plungers for Thermo Scientific RSH Autosampler Syringes

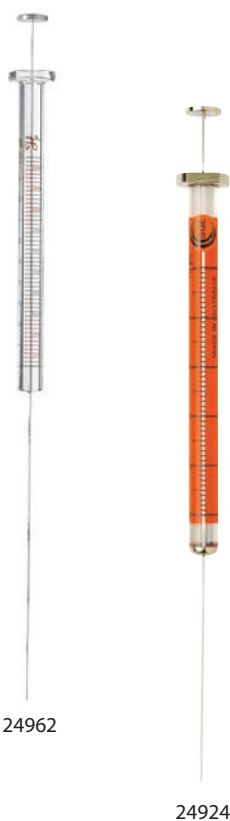
SGE

Syringe Volume	Needle Term.	SGE			Restek cat.#
		Model	cat.#	qty.	
10 µL	F	P10F-RSH-GT	032810	ea.	23936
25 µL	F	P25F-RSH-GT	032815	ea.	23938
50 µL	F	P50F-RSH-GT	032821	ea.	23939
100 µL	F	P100F-RSH-GT	032825	ea.	23940
250 µL	F	P250F-RSH-GT	032831	ea.	23941



23936

Note: Compatible with Thermo Scientific gas-tight syringes only.



Autosampler Syringes for Thermo Scientific GCs

- Hamilton and SGE syringes are designed and tested to meet critical autosampler performance needs.
- Needle point styles are designed to withstand multiple, rapid injections through a septum.

Hamilton

Volume	Needle Term.	Needle Gauge	Needle Length	Point Style	Hamilton Model	cat.#	qty.	Restek cat.#
10 µL	N	25s	2"	2	701SN	80320	ea.	24961
10 µL	N	26s	3.15"	AS	701SN	80318	ea.	24962

SGE

Volume	Needle Term.	Needle Gauge	Needle Length	Point Style	SGE Model	cat.#	qty.	Restek cat.#
0.5 µL	R	23	50 mm	Cone	0.5BNR-C/F-0.63	000492	ea.	24928
0.5 µL	R	26	50 mm	Cone	0.5BNR-C/F-0.47	000490	ea.	24926
NEW! 5 µL	F	26	50 mm	Cone	5F-C/T-5/0.47C	001982	ea.	22251
NEW! 10 µL	F	23	50 mm	Cone	10F-C/T-5/0.63C	002981	ea.	22255
NEW! 10 µL	R	23	50 mm	Cone	10R-BT-0.63	0029841	ea.	24932
NEW! 10 µL	R	23	50 mm	Cone	10R-C/T-0.63C	002984	ea.	23903
NEW! 10 µL*	F	23	50 mm	Cone	10F-C/T-GT-5/0.63C	002987	ea.	22254
NEW! 10 µL	F	25	50 mm	Cone	10F-C/T-5/0.5C	002967	ea.	23902
NEW! 10 µL	F	26	50 mm	Cone	10F-C/T-5/0.47C	002980	ea.	22252
10 µL	F	26	50 mm	Cone	10F-BT-5/0.47C	0029801	ea.	24922
NEW! 10 µL	F	26	50 mm	Cone	10F-C/T-5/0.47C	002986	6-pk.	22253
10 µL	F	26	50 mm	Cone	SK-10F-BT-5/0.47C	0029861	6-pk.	24925
10 µL	F	26	80 mm	Cone	10F-BT-8/0.47C	0029921	ea.	24924
NEW! 10 µL	F	26	80 mm	Cone	10F-C/T-8/0.47C	002992	ea.	23904
10 µL	R	26	80 mm	Cone	10R-BT-8/0-0.47C	0029931	ea.	24934
NEW! 10 µL	R	26	80 mm	Cone	10R-C/T-8/0.47C	002993	ea.	23901

*Gas-tight syringe.

Replacement Needle and Plunger Kit for Thermo Scientific Autosampler Syringes

SGE

Syringe Volume	Needle Gauge	Needle Length	Point Style	SGE cat.#	qty.	Restek cat.#
0.5 µL	26	50 mm	Cone	033770	kit	24927
0.5 µL	23	50 mm	Cone	033772	kit	24929

Guide to Needle Termination Codes

Hamilton:

- (N) Cemented Needle
- (RN) Removable Needle
- (ASN) Autosampler Cemented Needle
- (ASRN) Autosampler Removable Needle
- (TLL) PTFE Luer Lock
- (KH) Knurled Hub
- (LT) Luer Tip
- (LTN) Luer Tip Cemented Needle

SGE:

- (F) Fixed Needle
- (R) Removable Needle
- (LL) Luer Lock
- (LT) Luer Tip



Replacement Needles for Thermo Scientific Autosampler Syringes

SGE

Syringe Volume	Needle Gauge	Needle Length	Point Style	SGE cat.#	qty.	Restek cat.#
0.5 µL	26	50 mm	Cone	033770	kit	24927
0.5 µL	23	50 mm	Cone	033772	kit	24929
10 µL	26	80 mm	Cone	031535	3-pk.	24935
10 µL	23	50 mm	Cone	037787	2-pk.	24933

Replacement Plungers for Thermo Scientific Autosampler Syringes

SGE



Syringe Volume	Needle Term.	Model	SGE cat.#	qty.	Restek cat.#
10 µL	F	P10F-C/T-GT	0318120	2-pk.	23905

instrument reference

Autosampler Syringes for Thermo Scientific GCs

Autosampler syringes for TriPlus, AS3000, AS2000, AS200/800 GCs. The following autosamplers are compatible with the respective SGE and Hamilton syringes. For further information or questions, contact your Restek sales representative or technical service.

SGE Syringes

TriPlus	AS3000	AS2000	AS200/800	Restek cat.#	Page
•	•			24928	380, 384
•	•			24926	380, 384
•				23901	384
•				23902	384
•				23903	384
•				23904	384
•				22251	384
•				22252	384
•				22253	384
•				22254	384
•				22255	384
•				24921	380
	•	•	•	24922	380, 384
	•	•	•	24925	380, 384
	•	•	•	24932	380, 384
	•	•		24920	380
		•		22749	380
		•		24924	384
		•		24934	384

Replacement Needles for SGE Syringes for Thermo Scientific GCs

TriPlus	AS3000	AS2000	AS200/800	Restek cat.#	Page
•	•			24929	380, 384, 385
•	•			24927	384, 385
•	•	•	•	24933	380, 385
•		•	•	24935	385

Replacement Plungers for SGE Syringes for Thermo Scientific GCs

TriPlus	AS3000	AS2000	AS200/800	Restek cat.#	Page
•				23905	385

Hamilton Syringes

TriPlus	AS3000	AS2000	AS200/800	Restek cat.#	Page
		•	•	24962	384