

High Dynamic (HD) Headspace Syringes

for CTC CombiPAL Autosamplers

- High Dynamic (HD) plunger optimized for higher throughput in the headspace technique.
- Excellent performance over a large range of temperatures and temperature gradients.
- Increased lifetime, as compared to traditional headspace syringes.
- Increased accuracy and reproducibility of headspace GC analysis.

Hamilton

Volume	Needle Term.	Needle Gauge	Needle Length	Point Style	Hamilton		qty.	Restek cat.#
					Model	cat.#		
1.0 mL	N	23	2"/51 mm	5	1001	203082	ea.	26552
2.5 mL	N	23	2"/51 mm	5	1002	203084	ea.	26553
5.0 mL	N	23	2"/51 mm	5	1005	203086	ea.	26554
1.0 mL	N	26	2"/51 mm	5	1001	203141	ea.	26555
2.5 mL	N	26	2"/51 mm	5	1002	203181	ea.	26556
5.0 mL	N	26	2"/51 mm	5	1005	203182	ea.	26557

Replacement Plungers for HD-Type CTC CombiPAL AS Syringes

Hamilton

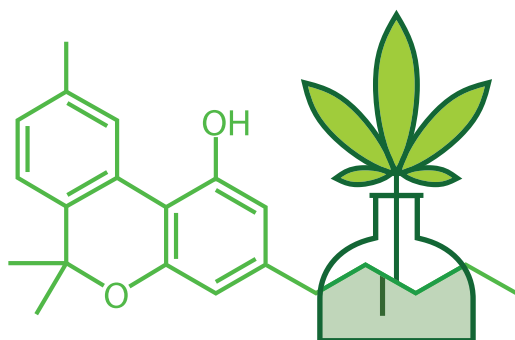
Volume	Hamilton		qty.	Restek cat.#
	Model	cat.#		
1.0 mL	1001	207114	ea.	26558
5.0 mL	1005	207116	ea.	26560



26554



26560



Growing Analytical Solutions for Medical Cannabis Labs

Products and expertise for accurate, reliable results every time

www.restek.com/cannabis

Guide to Needle Termination Codes

Hamilton:

- (N) Cemented Needle
- (RN) Removable Needle
- (ASN) Autosampler Cemented Needle
- (ASRN) Autosampler Removable Needle
- (TLL) PTFE Luer Lock
- (KH) Knurled Hub
- (LT) Luer Tip
- (LTN) Luer Tip Cemented Needle

SGE:

- (F) Fixed Needle
- (R) Removable Needle
- (LL) Luer Lock
- (LT) Luer Tip



22757



24922

Autosampler Syringes for CTC GCs

- Hamilton and SGE syringes are designed and tested to meet critical autosampler performance needs.
- Needle point styles are designed to withstand multiple, rapid injections through a septum.

Hamilton

Volume	Needle Term.	Needle Gauge	Needle Length	Point Style	Hamilton Model	cat.#	qty.	Restek cat.#
1.2 µL	N	26	2"/51 mm	AS	7701.2N	203185	ea.	22755
5 µL	N	26s	2"/51 mm	AS	75N	203189	ea.	22756
10 µL	N	23s	2"/51 mm	AS	701N	203361	ea.	22757
10 µL	N	23s-26s	2"/51 mm	AS	701N	203362	ea.	22758
10 µL	N	23s	2"/51 mm	2	701N	203363	ea.	22759
10 µL	N	26s	2"/51 mm	AS	701N	203205	ea.	22761
10 µL	N	26s	2"/51 mm	2	701N	203269	6-pk.	22762
25 µL*	N	26s	2"/51 mm	AS	1702N	203043	ea.	22763
25 µL*	N	26s	2"/51 mm	AS	1702N Slim Line**	203074	ea.	22764
100 µL*	N	26s	2"/51 mm	AS	1710N Slim Line**	203076	ea.	22765

Due to collar design, Hamilton syringes may not work with older generation LEAP autosamplers.

*Gas-tight syringe.

**Barrel OD = 6.7 mm; all other 25 µL and 100 µL syringes have a 7.9 mm barrel OD.

SGE

Volume	Needle Term.	Needle Gauge	Needle Length	Point Style	SGE Model	cat.#	qty.	Restek cat.#
0.5 µL	R	23	50 mm	Cone	0.5BNR-C/F-0.63	000492	ea.	24928
0.5 µL	R	26	50 mm	Cone	0.5BNR-C/F-0.47	000490	ea.	24926
5 µL	F	23	50 mm	Cone	5F-C/F-5/0.63	001981	ea.	24921
5 µL	F	26	50 mm	Cone	5F-BT-5/0.47	0019821	ea.	24920
10 µL*	F	23	50 mm	Cone	10F-BT-GT-5/0.63C	0029871	ea.	22749
10 µL	R	23	50 mm	Cone	10R-BT-0.63	0029841	ea.	24932
NEW! 10 µL*	F	23	50 mm	Cone	10F-C/T-GT-5/0.63C	002987	ea.	22254
NEW! 10 µL	F	23	50 mm	Cone	10F-C/T-5/0.63C	002981	ea.	22255
10 µL	F	26	50 mm	Cone	10F-BT-5/0.47C	0029801	ea.	24922
10 µL	F	26	50 mm	Cone	SK-10F-BT-5/0.47C	0029861	6-pk.	24925
NEW! 10 µL	F	26	50 mm	Cone	10F-C/T-5/0.47C	002980	ea.	22252
NEW! 10 µL	F	26	50 mm	Cone	10F-C/T-5/0.47C	002986	6-pk.	22253
NEW! 25 µL*	F	23	50 mm	Cone	25F-C/T-GT-5/0.63C	003987	ea.	23897
25 µL*	F	23	50 mm	Cone	25F-BT-GT-5/0.63C	0039871	ea.	22751
NEW! 25 µL*	R	26	50 mm	S	25R-C/T-GT-5/0.47H	003988	ea.	23899
100 µL*	F	23	50 mm	Cone	100F-C/T-GT-5/0.63C	005335	ea.	22753
100 µL*	R	26	50 mm	Cone	100R-C/T-GT-5/0.47C	005333	ea.	22754

*Gas-tight syringe.

Replacement Needles for CTC Autosampler Syringes

SGE

Syringe Volume	Needle Gauge	Needle Length	Point Style	SGE cat.#	qty.	Restek cat.#
0.5 µL	23	50 mm	Cone	033772	kit	24929
10 µL	23	50 mm	Cone	037787	2-pk.	24933

Replacement Plungers for CTC Autosampler Syringes

SGE

Syringe Volume	Needle Term.	SGE Model	cat.#	qty.	Restek cat.#
25 µL	F	P25F-C/T-GT	031817	ea.	23907
25 µL	F	25F-BT-GT	0318171	ea.	23900



24933

23900

