

## similar phases

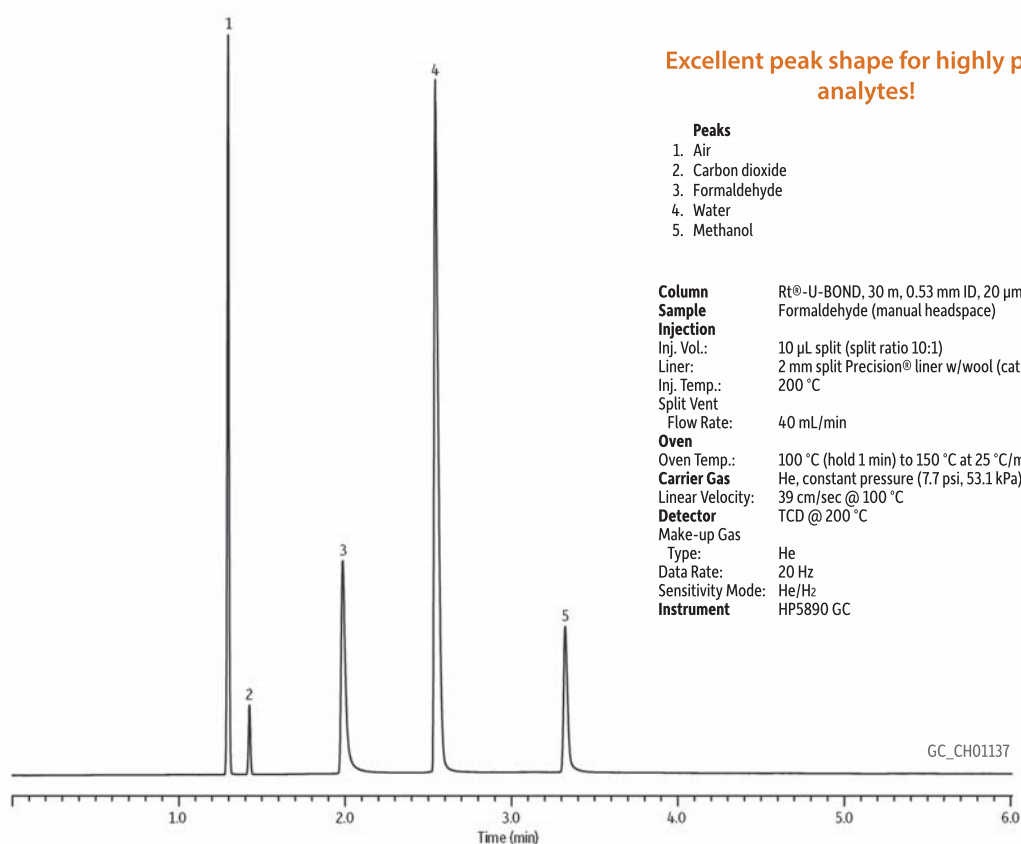
HP-PLOT U, CP-PoraPLOT U, CP-PoraBOND U

**Rt<sup>®</sup>-U-BOND Columns** (fused silica PLOT)

divinylbenzene ethylene glycol/dimethylacrylate

- Restek's highest polarity porous polymer column.
- Polar PLOT column, incorporating divinylbenzene ethylene glycol/dimethylacrylate.
- Highly inert for the analysis of polar and nonpolar compounds.
- Stable to 190 °C.

ID	df	temp. limits	15-Meter cat.#	30-Meter cat.#
0.25 mm	8 µm	to 190 °C	19771	19772
0.25 mm	12 µm	to 190 °C	19782	—
0.32 mm	10 µm	to 190 °C	19751	19752
0.53 mm	20 µm	to 190 °C	19749	19750

**Formaldehyde on Rt<sup>®</sup>-U-BOND****PLOT Column Particle Trap**

- Includes two Press-Tight<sup>®</sup> connectors and a 2.5 m column.
- Protects detector and valves; connects between column and detector or valve.
- Eliminates detector spikes and scratches in valve rotors.

The technology used to adhere particles in PLOT columns is excellent; however, it is still possible for particles to dislodge when extreme pressure shocks and gas flow changes occur. This sometimes happens when valve switching or backflushing is used. In those cases, using particle traps is recommended.



Description	qty.	cat.#
PLOT Column Particle Trap, 2.5 m, 0.32 mm ID with 2 Press-Tight Connectors	ea.	19753
PLOT Column Particle Trap, 2.5 m, 0.53 mm ID with 2 Press-Tight Connectors	ea.	19754