



25471



25468



25919



25920



24986



25469



25470

Injector & Autosampler Supplies for Shimadzu HPLC Systems

Description	Model #	Similar to Shimadzu Part #	qty.	cat.#
Needle Seal, Vespel	LC-2010, SIL-10ADvp, 10AXL	228-33355-04	ea.	25468
Needle Seal, PEEK	SIL-10ADvp, 10AXL, HT	228-33355-01	ea.	25919
Needle Seal, PEEK	SIL-2010A/C HT, 20A/AC	228-42325-01	ea.	25920
Rotor Seal	SIL-10ADvp	228-21217-97	ea.	24986
Rotor Seal Assembly	SIL-10A, 10AXL, 10Ai	228-21217-91	ea.	25469
Stator Assembly	SIL-10A, 10AXL, 10Ai	228-21220-91	ea.	25470
Syringe, 500 µL	SIL-10A, 10AXL, 10Ai	228-25237-04	ea.	25471

For even more options, visit www.restek.com/LCacc



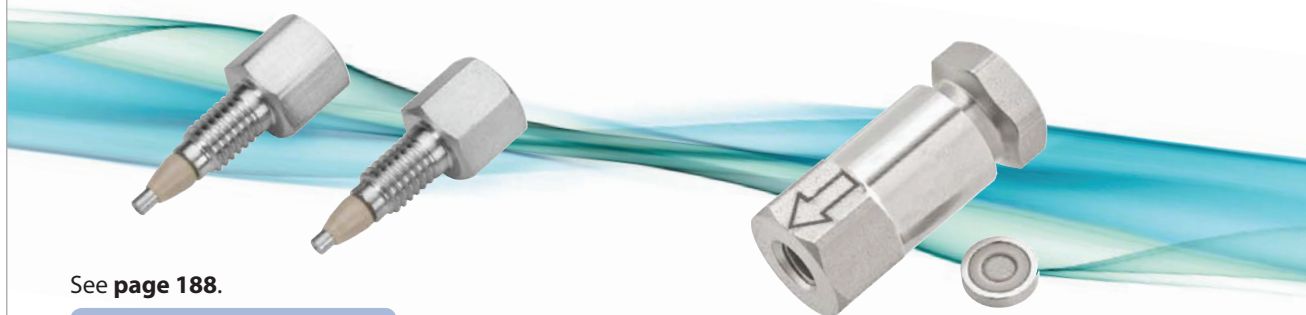
25284

Deuterium Lamps for Shimadzu HPLC Systems

Description	Model #	Similar to Shimadzu Part #	qty.	cat.#
Deuterium Lamp	SPD-10, 10A, 10AVvp, SPD-20A, SPD-20AV	228-34016-02	ea.	25284

Protect your column and your UHPLC performance with UltraShield and UltraLine UHPLC filters

A cost-effective way to extend the lifetime of any UHPLC column without sacrificing your UHPLC performance on any LC system.



See page 188.

www.restek.com/LCguard



Pump Supplies for Shimadzu HPLC Systems

Description	Model #	Similar to Shimadzu Part #	qty.	cat.#
Plunger Seal, Polyethylene, Gold**	LC-10Ai, 10AS, 10AT, 10ATvp, LC-7A	228-21975-00	ea.	25290
Plunger Seal, Black*	LC-10AD, 10ADvp, LC-20AD/AB, LC-600, LC-2010 A/C HT, LC-9A	228-35146-00	ea.	24980
Plunger Seal, Gold**	LC-10ADvp, LC-20AD/AB	228-32628-00	ea.	24981
Plunger Seal, Black*	LC-10ATvp, LC-20AT, LC-HT, SIL-10ADvp, SIL-2010 A/C HT, SIL-20A/AC, SIL-HT	228-35145-00	ea.	24985
Plunger Rinse Seal	LC-10Ai, LC-10AS, LC-10AT, LC-10ATvp	228-28499-00	ea.	25292
Inlet Check Valve	LC-6A, LC-10AS	228-12353-91	ea.	25287
Inlet Check Valve	LC-600, LC-9A, LC-10AD	228-18522-91, 228-33492-91	ea.	25295
Inlet Check Valve	LC-10ADvp	228-39093-92	ea.	24984
Inlet Check Valve	LC-10AT, LC-10ATvp	228-32166-91	ea.	26521
Inlet Check Valve	LC-20AD/AB XR	228-48249-91, 228-45704-91	ea.	26426
Outlet Check Valve	LC-6, LC-10AS, LC-8A	228-09054-93	ea.	25288
Outlet Check Valve Rebuild Kit Includes: ruby ball (2), seat (2), thin washer (2), thick washer (2), retainer washer (2)	LC-6A, LC-10AS	228-11200-91	kit	25289
Outlet Check Valve	LC-600, LC-9A, LC-10AD, LC-10AT	228-18522-92, 228-32531-92	ea.	25282
Outlet Check Valve	LC-10ADvp, LC-10ATvp	228-34976-91	ea.	24983
Outlet Check Valve	LC-20AD/AB XR	228-45705-91, 228-45563-91	ea.	26427
Sapphire Plunger	LC-10AS, LC-7A	228-17019-93	ea.	25291
Sapphire Plunger	LC-600, LC-9A, LC-10AD	228-18523-91	ea.	25294
Sapphire Plunger	LC-20AT	228-35009-93	ea.	25921
Sapphire Plunger	LC-20AD/AB, LC-2010	228-35601-93	ea.	25922
Sapphire Plunger	LC-2010A/C HT, LC-HTSIL-10ADvp, SIL-20A/AC	228-35010-91	ea.	25923
Plunger Assembly, Ceramic	LC-10ADvp	228-35601-91	ea.	25472
Plunger Assembly, Ceramic	LC-10ATvp	228-35009-92	ea.	25473
Plunger Assembly, Sapphire	LC-10ADvp	228-35601-91	ea.	24982
Suction Filter, SS	LC-10ADvp, 10ATvp, 20AD/AB, 2010A/C HT	228-45707-91	ea.	25924

*Graphite-filled PTFE; best for organic solvents.

**Ultra-high molecular weight polyethylene (UHMWPE); increased resistance to abrasion; best for buffers.

For even more options, visit www.restek.com/LCacc

